



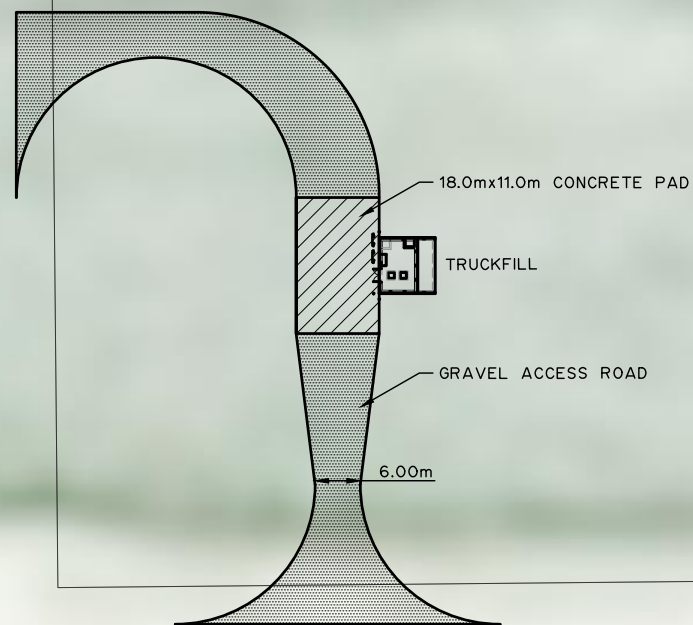
NE¼ 23 104-15-5

NW¼ 24 104-15-5

SE¼ 23 104-15-5

SW¼ 24 104-15-5

TOWNSHIP ROAD 1052



LOT 1
BLOCK 1
PLAN 1020707

ACCESS ROAD

LOT 2
BLOCK 1
PLAN 1020707

THIS DRAWING MAY HAVE BEEN MODIFIED FROM ITS ORIGINAL SIZE. ALL SCALE NOTATIONS INDICATED (i.e. 1:1000 etc) ARE BASED ON 22"x34" FORMAT DRAWINGS

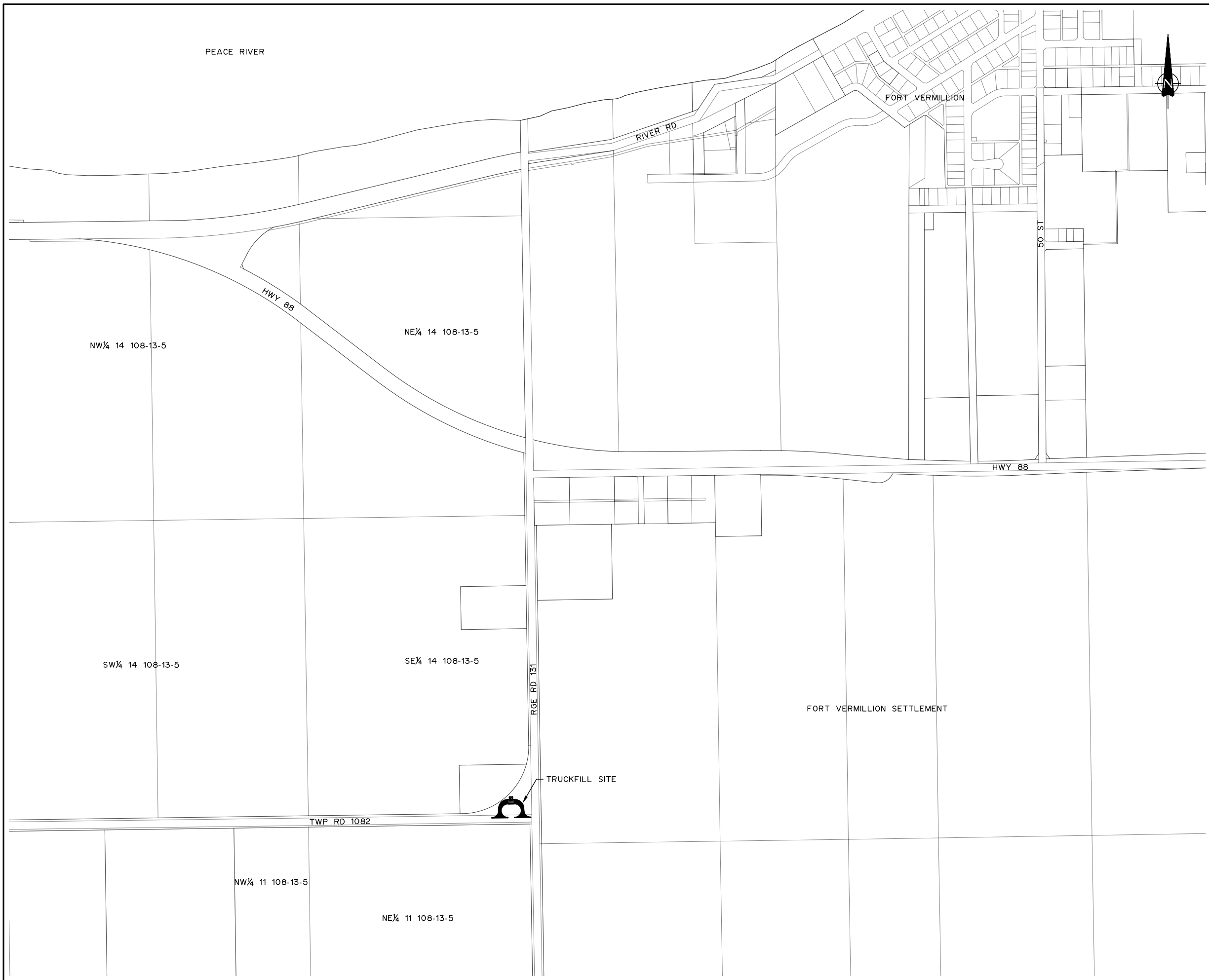
ISSUE	YY-MM-DD	REVISION
1	16-01-27	FOR PRELIMINARY APPROVAL



MACKENZIE COUNTY

RURAL POTABLE WATER
INFRASTRUCTURE
TRUCKFILL A AT BUFFALO HEAD
PRAIRIE
SITE PLAN

DESIGNED	B.L.	JOB	5223-082-00
DRAWN	J.P., A.E.	SCALE	1:500
DATE	JANUARY 2016	DRAWING	C2.1



THIS DRAWING MAY HAVE BEEN MODIFIED FROM ITS ORIGINAL SIZE. ALL SCALE NOTATIONS INDICATED (i.e. 1:1000 etc) ARE BASED ON 22"x34" FORMAT DRAWINGS

ISSUE	YY-MM-DD	REVISION
1	16-01-27	FOR PRELIMINARY APPROVAL



MACKENZIE COUNTY

RURAL POTABLE WATER
INFRASTRUCTURE
TRUCKFILL B AT FORT VERMILLION
LOCATION PLAN

DESIGNED	B.L.	JOB	5223-082-00
DRAWN	J.P., A.E.	SCALE	1:5000
DATE	JANUARY 2016	DRAWING	C2.2

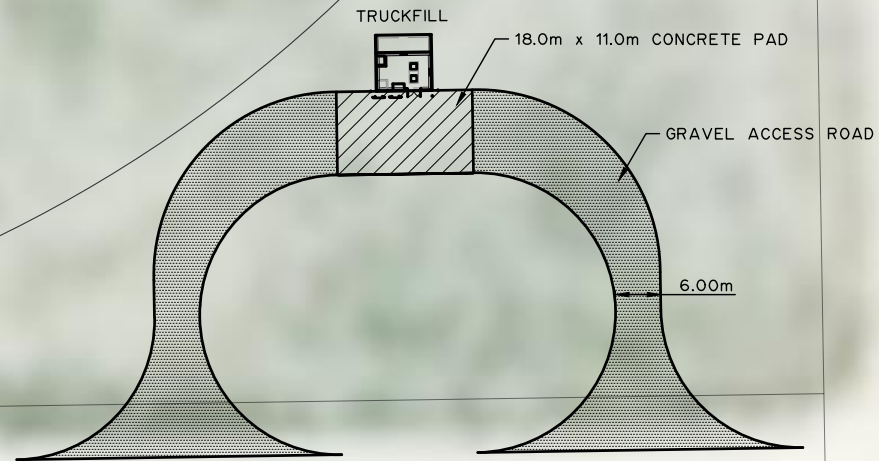
SE¼ 14 108-13-5

LOT 2
BLOCK 1
PLAN 112 0425

RANGE ROAD 131

TOWNSHIP ROAD 1082

NE¼ 11 108-13-5



THIS DRAWING MAY HAVE BEEN MODIFIED FROM ITS ORIGINAL SIZE. ALL SCALE NOTATIONS INDICATED (i.e. 1:1000 etc) ARE BASED ON 22"x34" FORMAT DRAWINGS

ISSUE	YY-MM-DD	REVISION
1	16-01-27	FOR PRELIMINARY APPROVAL



MACKENZIE COUNTY

RURAL POTABLE WATER
INFRASTRUCTURE
TRUCKFILL B AT FORT VERMILLION
SITE PLAN

DESIGNED	B.L.	JOB	5223-082-00
DRAWN	J.P., A.E.	SCALE	1:500
DATE	JANUARY 2016	DRAWING	C2.3